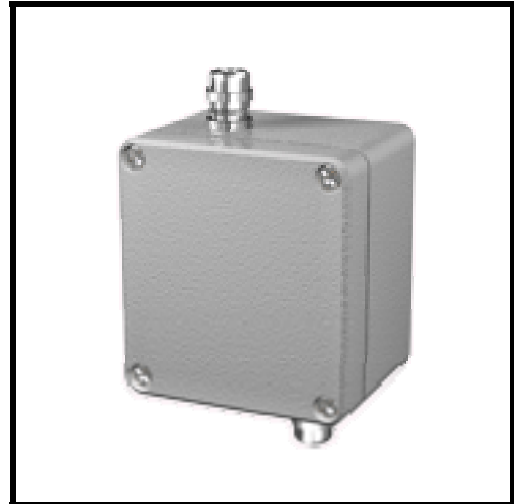


**DESCRIPTION**

The BASI BPHT50 transmitter provides an temperature compensated 4-20mA output. The transmitter is ideal for interfacing to PLCs, data loggers and chart recorders. The isolation feature solves many problems associated with ground loops and streaming currents. Automatic temperature compensation is provided by an integral Pt-100 temperature sensor and the associated circuitry. Inbuilt trimpots allow user calibration of electrode offset (cal) and gain (slope). The standard pH range is adjustable from 0-14 to 2-12 pH. The BPHT50 is available with a wide choice of electrodes to suit the installation and the chemical medium

- **2-wire loop-powered 4-20mA output**
- **Temperature compensated**
- **Submersible and inline models**
- **Incorporates your choice of sensor**
- **Inbuilt calibration adjustments**
- **Selection of immersion lengths**
- **4-digit LCD or LED-indicator (option)**
- **Low cost**

**SPECIFICATIONS GENERAL**

**Input** : pH electrode where  $E^{\circ} = 7\text{pH}$   
or ORP (redox) electrode

**Output** : 4-20mA adjustable  
from 2-12pH to 0-14pH  
or -2000mV to +2000mV (ORP)

**Accuracy** :  $< \pm 0.05\%$  of full scale (when calibrated)

**Compensation**: Temperature compensated to 100°C  
(pH models only)

**Supply** : 8 to 30V DC

**Protection** : Reverse polarity protected

**Maximum load**: 600 ohm

**Ambient temp** : -20-60°C

**Humidity** : 5 to 95% non-condensing

**Connection** : 2 PG7 glands

**Protection class** : IP65

**Weight** : 150g

**Dimension** : H 80 W 46 x D 32 mm

**EMC** : EN 50081-1, EN 50082-2,  
73/23/EEC & 89/336/EEC

**ORDER INFORMATION**

BPHT50

<b>MOUNTING</b>	<b>ELECTRODE</b>
X None	X None
1 Clip for DIN-rail	1 Electrode specify