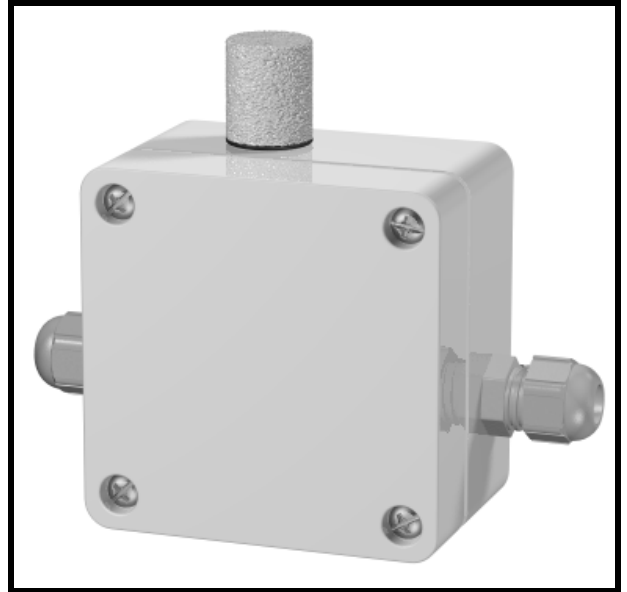


- **Low cost**
- **RH and temperature conversion**
- **RS485 isolated interface**
- **Up to 32 probes in a network**
- **Optional stainless steel sintered filter**
- **IP65 protection**

BASI's HVAC humidity probe BRHW200 has the same features as the BRHV200 model but with RS485 output and is designed specially for multi-point measurement and data acquisition in a network with up to 32 devices. Using a thin-film sensor, whose capacitance varies proportionally to medium relative humidity, and a thin-film temperature sensor, the probe measures relative humidity and temperature of air and non-aggressive gases at atmospheric pressure, and transforms it into information sent via standard RS485 interface with ACSII protocol. BRHW200 is equipped with a convenient plastic enclosure with IP65 and two PG7 cable glands for easy and fast network building. This model can be optionally equipped with a stainless steel sintered filter for sensor protection. Thanks to its robust design, network communication potential, and low price, the RHW transmitter can be widely used in HVAC building automation and warehouse control systems.



#### TECHNICAL SPECIFICATIONS

**Casing material** : ABS plastic  
**Pt-100 to 1000** : -20 - +60°C  
**Humidity range** : 0-100% (Capacitive sensor)

#### INSTALLATION

**Supply** : 5 VDC  $\pm$  5% max 100mA  
**Ambient temp** : -20 to 60°C  
**Mounting** : Field mount to IP65  
**Dimension** : 108 x 83 x 40mm

#### OUTPUT

**Interface type** : RS485  
**Function** : Configuration and networking  
**Network** : up to 32 units  
**Format** : 8 (data) + 1 (stop), even parity  
**Baud rate** : 1200, 2400, 4800, 9600 bps  
**Isolation from input** : 1500VAC for 1min

#### PERFORMANCE

**Accuracy** :  $\pm$ 0.2%(Temp)  $\pm$ 1% (RH)  
**Response time** : 5 sec  
**Isolation** : 1500VAC for 1min  
**EMC** : EN 50081-1, EN 50082-2  
 73/23/EEC & 89/336/EEC



#### ORDER INFORMATION

**BRHW200**  
**SINTERED FILTER**  
 X None  
 S Sintered filter